

The inspiration for this option is the layout and stair arrangement indicated in the model of the Georgian Theatre; a mezzanine is introduced above the first floor Guildhall level to create a gallery for viewing and interpreting the Guildhall when not in use, with the option for additional seating for performances. The area below the mezzanine becomes an interval bar.

The permanent stage and fixed seating would be replaced with temporary staging with some bleacher seating and some loose seating, with a maximum capacity of approximately 150 people. Approximately two thirds of the first floor Guildhall would have a flat floor allowing flexibility of use.

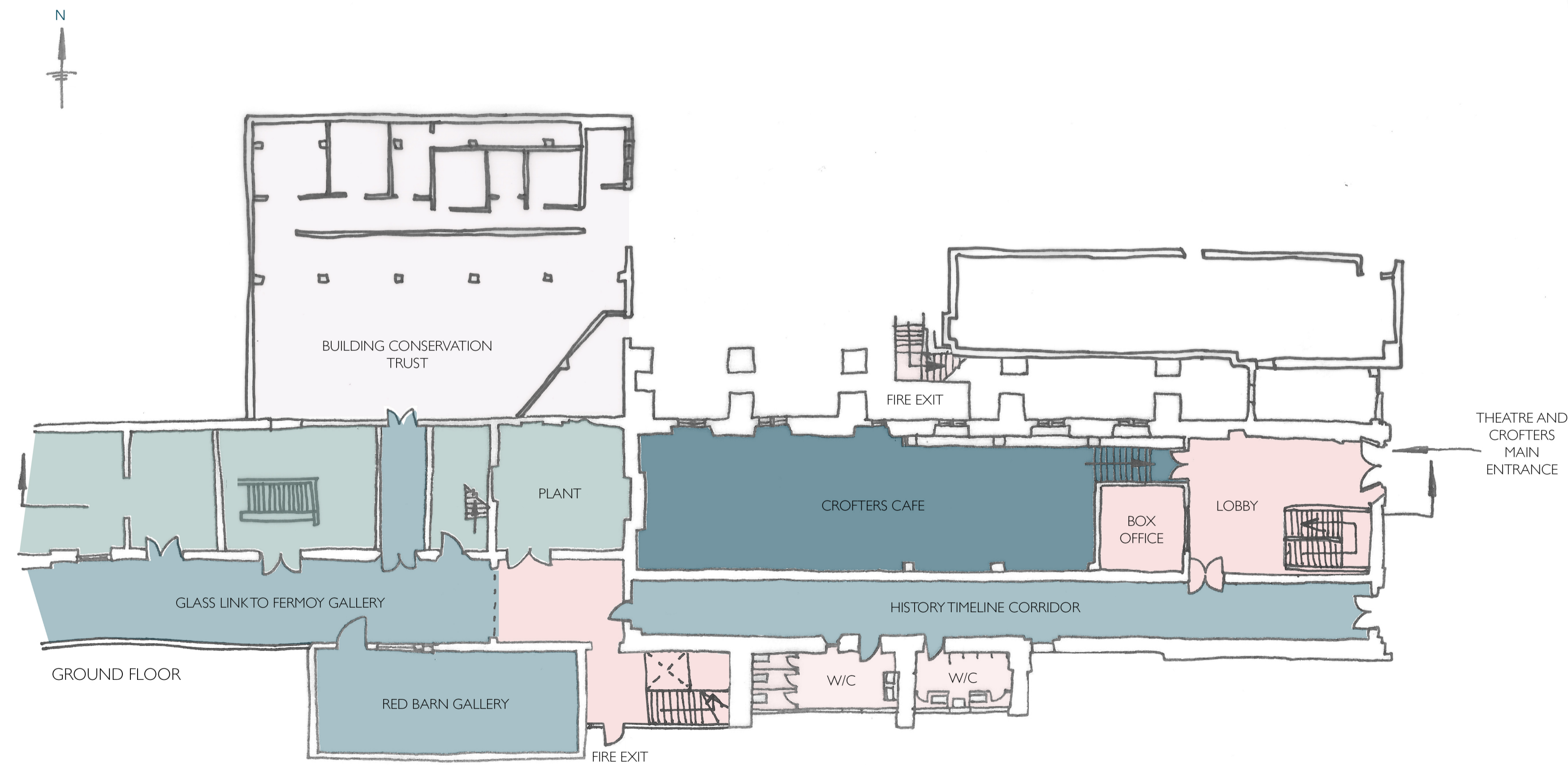
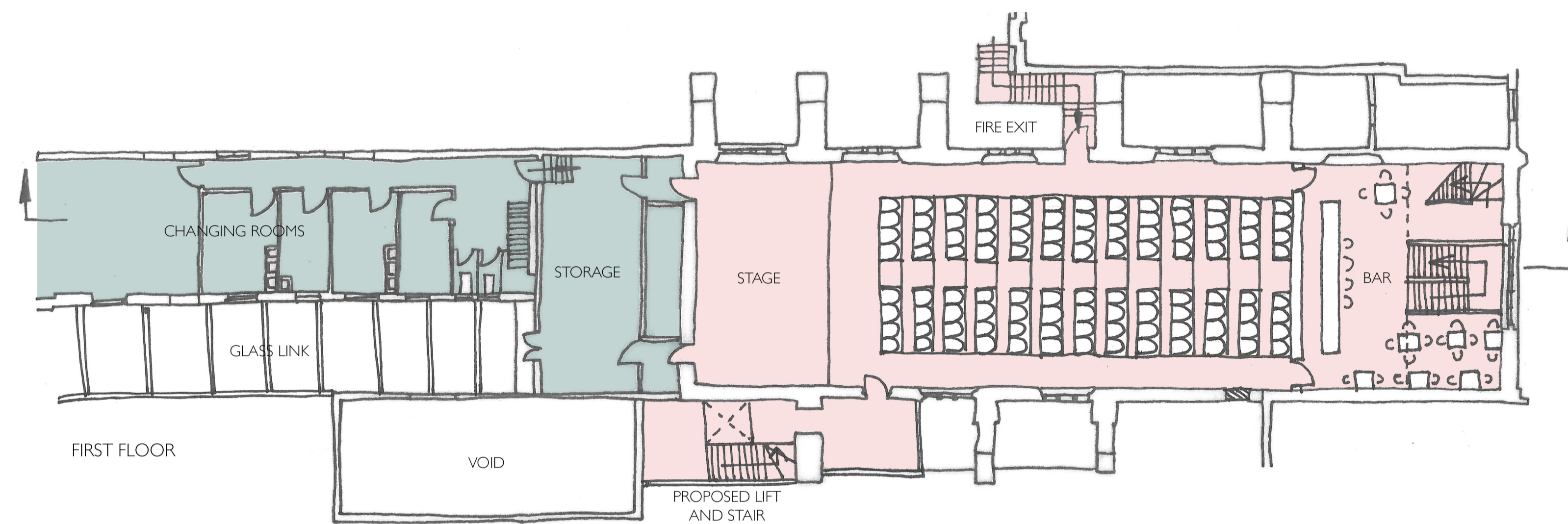
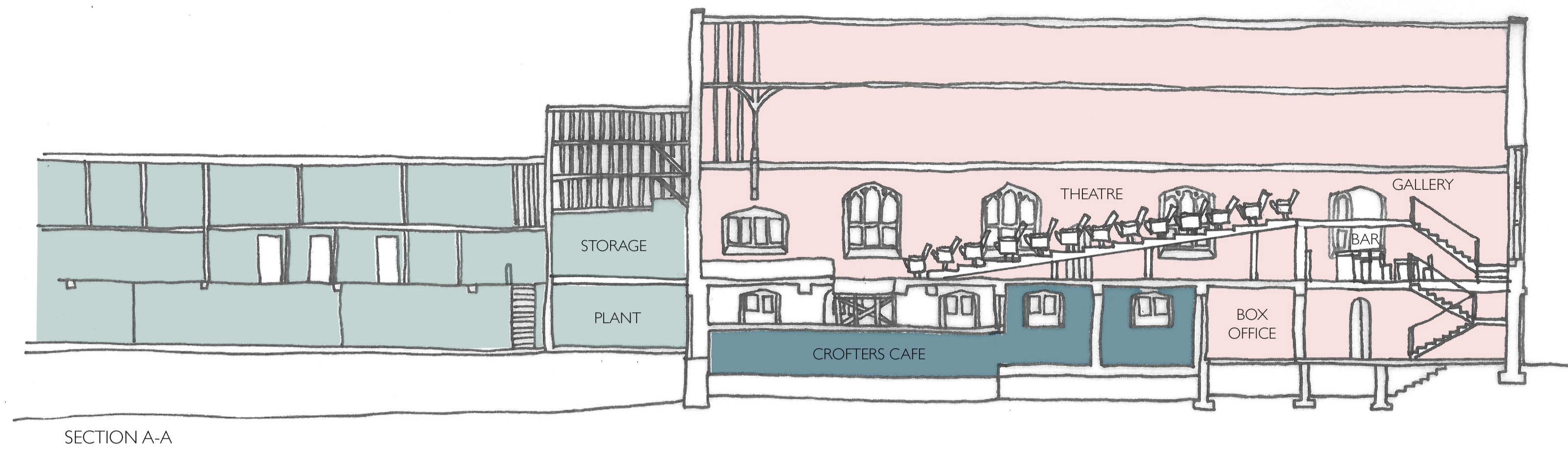
The current King Street access and Box Office/Reception arrangement is retained. A new platform lift and stair is provided adjacent to the Red Barn and a new glazed link provides covered access to the Fermoy Gallery.

The corridor becomes an interpretation space describing the development of the Guildhall from its first construction to the present day.

The Red Barn becomes a flexible space for a bar, performance, exhibition or community uses.

The undercroft restaurant has a dedicated entrance from King Street and washroom facilities.

- BUILDING CONSERVATION TRUST
- THEATRE SPACES
- PUBLIC SPACES
- STAFF SPACES
- CROFTERS CAFE



PROS

- Approximately two thirds the floor area of the Guildhall becomes flat enabling it to be used for other activities
- The Guildhall is made accessible for wheelchair and other users
- The Guildhall is provided with a permanent interpretation space and viewing gallery
- A first floor interval bar is provided at the back of the Guildhall

CONS

- Approximately 150 seats can be provided for performances
- The bleacher seating would need to be permanently stored in the Guildhall space
- Those using the accessible route to the first floor are separated from those using the main entrance to the first floor
- Public access and the reception is remote from the Red Barn and Fermoy Gallery and any unwelcome activity is unobserved
- The unattractive metal escape stair at the courtyard entrance is retained
- Temporary staging, loose seating and tables, etc, need to be stored when not in use, or hired, with associated setting out for events